



**CBM Australia
Annual Report
2025**

Cover: Jhonny being held by his father in the Philippines.

Opposite: Dora Francis and her two grandchildren looking at old photos after receiving cataract surgery in Kenya.



Content

- 4** Who we are
- 6** How we work
- 8** Messages from the Chair and CEO
- 10** Our work internationally
- 12** Because of you
- 20** Your support in action
- 22** Our governance
- 24** Our finances

We acknowledge Aboriginal and Torres Strait Islander peoples as the First Australians and Traditional Custodians of the lands on which we work and live in Australia. We acknowledge their ongoing resilience, contributions and connection to land, culture and water, and we pay our respects to their Elders, past, present and future.

Who we are

CBM Australia is a Christian international development organisation committed to empowering people with disabilities in the poorest communities around the world. CBM Australia is a member of the CBM Global Disability Inclusion Federation.

Our vision

We are driven by our vision for an inclusive world in which all people with disabilities enjoy their human rights and achieve their full potential.

Our mission

We are committed to our mission of fighting to end the cycle of poverty and disability.

We work for positive change, inspired by a vision of a just and equitable world.

Our values

We champion inclusion.

We pursue excellence.

We strive for justice.

We embrace partnerships.

We live with integrity.

At CBM Australia we live out our values.

Thanks to the generosity and commitment to justice of our supporters, partners, and allies, 2025 saw sustainable change for people with disabilities living in poverty.

More than 1.56 million people had their lives transformed through our international programs and many millions more through our advisory and advocacy work.

In addition, CBM Australia influenced advisory partners who bring a combined program spend in excess of \$1 billion.

80%

of the poorest people globally are in regions highly exposed to climate hazards



Zulsyahril, who is hard of hearing, tending to eggplants in his vegetable garden in Indonesia.



Angelina getting her eyes tested at a CBM-facilitated eye testing service in the Philippines.



Jennifer holding up vegetables from her vegetable stall in Kenya.

How we work

We work alongside people with disabilities living in the world's poorest places, to fight poverty and exclusion and transform lives.

We work in more than 20 countries overall, investing in long-term, authentic partnerships with the disability movement.

We multiply our impact by delivering a combination of inclusive community-based programs, strengthening health systems, advocating for local, national and global policy change, and providing inclusion advice and expertise to other organisations and governments.

Drawing on more than 115 years' experience and driven by Christian values, we work with the world's most marginalised people and communities to:

- End the cycle of poverty and disability;
- Treat and prevent conditions that lead to disability; and
- Build inclusive communities where everyone can enjoy their human rights and achieve their full potential.

Why we exist

One billion people globally have a disability – that's 1 in 6 of us, or around 16% of the world's population.¹ 80% of those with a disability live in low- and middle-income countries. In fact, 20% of the poorest people living in these countries have disabilities.

People with disabilities in these nations face enormous challenges including stigma, violence, discrimination and profoundly diminished access to physical and mental health care, food, education, assistive devices, and climate adaptation.

Together, this means that people with disabilities commonly live in extreme poverty.

1 billion+

people have a disability

80%

of whom live in low- and middle-income countries

20%

of the poorest people living in these countries have disabilities

We're for the one — and the one billion

¹ [WHO Disability Fact Sheet, 2023](#)

Messages from the Chair and CEO

Andrew Ellis Board Chair

Our incredible work, for and alongside people with disabilities in the poorest communities, is ever challenging and gratifying. 2025 underlined that the journey of our collective efforts is never linear. Together we learn, we adapt, and we commit to the long haul – expecting and experiencing that God will bring all things to the right outcomes.

CBM Australia has been able to adapt and to hold wonderful gains despite greater fragility, insecurity, and funding uncertainty at all levels globally.

As a Board, we've reflected on our God as our safe-house. When we enter, we know a steadying peace whatever the outer turbulence. We are never sorry we knocked. And, in turn, we seek to mirror that solidarity, and reliability as a partner, in all our governance spaces.

“All those who know your mercy, Lord, will count on you... For you have never yet forsaken those who trust in you.”

– PSALM 9:10²

The generosity of Australians compelled by CBM's cause has been remarkable in the 2025 context. We've also seen giving through gifts in will exceed \$10M across the last 2 years.

This is extraordinarily enabling at a time of shrinking funding spaces for disability equity and social inclusion.

On behalf of the Board, I thank each person and organisation that journeyed with CBM Australia in 2025. Thank you for staying the course of constructively breaking down barriers to inclusion. Together we are a reflection of that safe-house where there is room for all.

I also pause to personally acknowledge outstanding Directors who have reached the end of their Board tenure: Mick Turnbull at the end of 2025 and Elizabeth Lucas in mid-2026. The deep experience and long commitment of Mick and Elizabeth is warmly recognised; strong governance always enables stronger outcomes.

Jane Edge with Mary at a cataract screening in the Philippines.



Jane Edge Chief Executive Officer

CBM Australia is persistently focused on living out our values in championing inclusive behaviour and sustainable change efforts alongside people with disabilities and their communities. This includes very mindful stewarding of our resources, and steadily holding hope.

Being hopeful means being actively aware that we can do more with what we have, no matter the global headwinds and fragility all around us.

This Annual Report celebrates and anticipates. Together, our collective care and allyship makes possible both our daily wins and the longer narrative that draws us all in – a narrative of persistent collaboration towards resilient, thriving and inclusive communities.

Your influence in this picture matters. Every person experiencing disability and poverty, and every person focused on empowering inclusion, has a story to tell and makes a vital contribution.

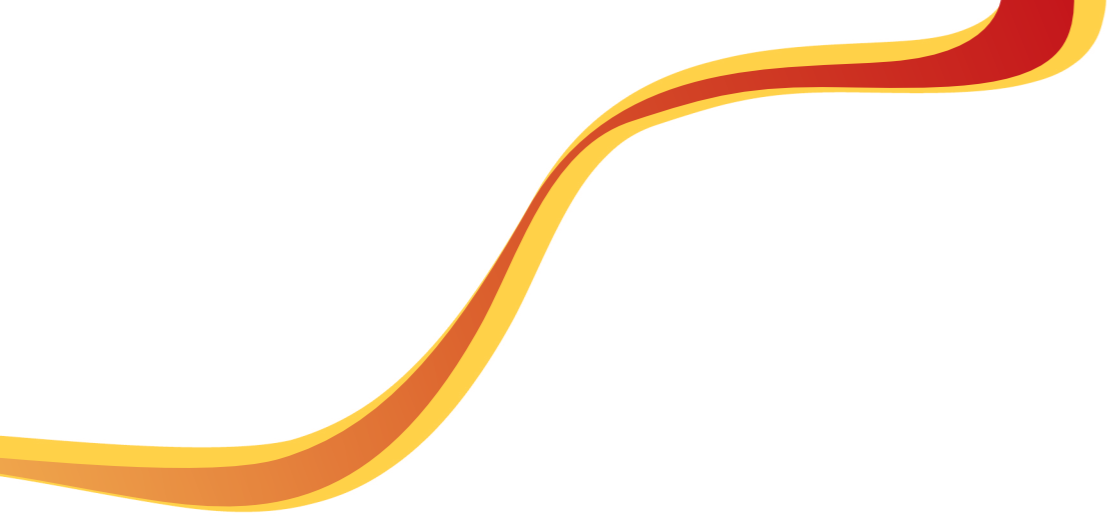
Every 'one' matters. And together, we build disability equity from the 'one' to the 'one billion'.

Our wider funding environment continues to be deeply challenging. The general decline in Overseas Development Assistance across many western nations is sobering, and we continue to support and work with partners and allies as they navigate these challenges.

CBM Australia's reporting of lives transformed through our international programs in 2025 is lower than prior years. This reflects the positive impact of our work to eliminate neglected tropical diseases in Nigeria, significantly reducing the need for mass drug administration in project areas. It's an incredible achievement.

Our cause holds while our approaches innovate.

Enjoy seeing the ripple effect, including the multiplication, of your own contribution in the stories of this Annual Report. It comes to you with gratitude and an invitation to journey deeper.



Through the OPD LEAD project in Kenya, we supported OPDs to build robust financial systems, enhancing impact and sustainability.

Our work internationally

11

countries where our international projects operated

In 2025, CBM Australia expanded our reach and deepened our impact across Asia, Africa, and the Pacific. We worked with Organisations of People with Disabilities (OPDs), civil society, service providers, governments, and the private sector to make communities and systems more inclusive.

358

OPDs engaging through our international projects

In Nepal, we worked with local partners to deliver rehabilitation services through mobile health and rehabilitation camps – bringing care closer to people’s homes. Initiatives like these are vital, especially in remote areas.

51

OPDs engaging through our advisory work

Through the CBM Global 2025 Partner Feedback Exercise, we gained valuable insights into how our partners experience working with us. These findings informed commitments to further strengthen our ways of working and partnerships. For example, CBM Australia is working to constructively reduce reporting requirements for partners.

We have deepened our commitment to the disability movement. In consultation with OPDs, we proudly launched our Disability Movement Strengthening Framework. This Framework explains our approach and the support we provide,

reinforcing our role as an ally and helping to keep us accountable.

Our focus on OPDs remained strong, supporting them to deliver on their ambition to ensure the full inclusion and effective participation of people with disabilities in their communities. In Kenya, we supported 11 OPDs to lead their own projects – building stronger governance structures, enhancing leadership skills, and improving financial systems (see page 11).

We invested in research and learning to ensure disability policy and practice is evidence informed. We led a CBM Global enquiry into the sustainability of some of our projects – critical research that helps us understand what drives long-term impact. We also partnered with the Psychiatric Survivors Association of Fiji – the national organisation representing people with psychosocial disabilities – to better understand the barriers and enablers to community participation for people with psychosocial disabilities in Fiji.

CBM Australia’s Inclusion Advisory Group (IAG) continued to provide technical advice on disability inclusion in areas such as health, social protection,

livelihoods, disaster risk reduction, and climate resilience, working in partnership with OPDs to ensure their voice is heard.

We partnered with the Pacific Disability Forum and the Nossal Institute to map available support services (such as sign language support and personal assistance) for people with disabilities across the Pacific. We developed a framework to inform governments and organisations as they develop these crucial services.

Finally, we celebrated 17 years of technical partnership between CBM and the Australian Government's Department of Foreign Affairs and Trade (DFAT) – a collaboration that has been instrumental in embedding disability inclusion within Australia’s aid program, shaping DFAT policy, and supporting Australian leadership globally. While this partnership has concluded, new opportunities emerge for CBM to continue to influence the Australian development sector for disability inclusion.



Nelsie receives a life-changing eye check at a CBM-supported outreach camp in the Philippines – bringing her one step closer to restored sight.

Because of you

We know that disability and poverty create a cycle of disadvantage – leading to inequality, isolation, and exclusion. But thanks to you, our incredible CBM Australia supporters, that cycle is being broken every day.

In a year when global aid budgets faced significant cuts and economic uncertainty persisted, your generosity stood out. We are especially grateful to our faithful monthly givers, whose steady and reliable support is there even in the midst of these challenges. **You continued to give, making it possible to restore sight for people going needlessly blind from cataracts, to give a child in remote Nepal the chance to attend a vital rehabilitation camp, to help communities gain access to clean drinking water close to home, and so much more.**

Because of your strong commitment, we have been able to give more support

to people experiencing mental health conditions in the Philippines and Fiji through a program supported by the Australian Government through the Partnerships for a Healthy Region initiative. We have also started building a network of QualityRights Master trainers – experts who will train others in rights-based mental health – creating a ripple effect of change across the Asia-Pacific.

Through your prayers and advocacy, you have helped us strengthen partnerships and influence policy.

Over several years, we have been calling on the Australian Government to grow their support to Organisations of People with Disabilities (OPDs) as a vital way to shift the dial on disability equity and rights, both in our region and globally.

Your loud voice is being heard.

At the end of 2025, the Australian Government announced their largest-ever funding package for OPDs in our region. A \$50M commitment over the coming years will support the Pacific Disability Forum, ASEAN Disability Forum and the International Disability Alliance to grow their work to create positive and lasting change for people with disabilities.

We love connecting with our CBM Australia family, sharing stories, listening to your feedback, and answering your questions. Supporter Events in 2025 in Adelaide, Perth, Sydney, and Melbourne were truly inspiring. We gathered with hundreds of supporters to thank them for their passion, prayers, and generosity, and to share stories of hope from a wide range of CBM programs. For many, attending in their state has become a cherished annual tradition, while for others it was their very first CBM event

– making the experience of hearing stories like Nelsie's (pictured) even more meaningful. The commitment shown by our supporters was extraordinary, with one person travelling on three buses and three trains just to be part of an event – a powerful reminder of the dedication that drives this movement.

Whether you gave to a specific program, country, or area of work, we thank you. Your generosity is creating a more inclusive and equitable world for people with disabilities and their communities.

To learn more about the impact you've made and how CBM works with local partners in the some of the poorest places globally, visit: cbm.org.au/your-impact

Turning participation into leadership: how OPDs are driving change in Kenya

In 2025, CBM Australia continued its strong commitment to working with Organisations of People with Disabilities (OPDs) and upholding the principle of “nothing about us without us.”

We focused on strengthening OPDs from within – building their governance and leadership – and creating opportunities for them to influence decisions in their communities and with government. The OPD LEAD project in Kenya is a clear example of this commitment in action

Starting in 2023, CBM Australia partnered with 11 OPDs across 8 counties to strengthen OPD leadership, governance, and financial systems.

Our support gave OPDs the tools and confidence to lead their own initiatives, influence county governments, and create real change for people with disabilities. The goal was simple: OPDs should not just participate – they should lead.

The results speak for themselves. Most OPDs improved their governance and management systems, introducing clearer leadership structures, financial accountability, and proper record keeping. Several launched successful businesses, like poultry farming and events management, while nine now have running offices and seven secured external funding. One group formed a Savings and Credit Cooperative Society that united 23 OPDs.

“Reporting and having a procurement committee has helped us get funding from other organisations.” – Treasurer, Ilchamus Disability Network.

But that’s not all. The impact on individuals has been life-changing. 225 people received assistive devices such as wheelchairs and crutches. Two children had corrective surgeries – with one attending school for the first time.

“My daughter can now go to school like other children. This has lifted a big weight from our family.” – Parent of a child supported by the project.

Communities are seeing OPDs as leaders who have a voice in county planning and decision-making. In Kakamega, OPDs successfully advocated for increased health budgets and inclusive sports. Counties now consult OPDs on accessibility, ensuring sign language interpretation and accessible venues at public events.

“We now sit at the table when county budgets are planned. Our voices are being heard.” – OPD representative.

“We’ve also seen county governments take OPDs seriously, consulting them on accessibility and budgeting. That shift from being invisible to being recognised is very powerful.” – Vivian Sikinyi, Program Officer, CBM Global Kenya Country Team.

While there were challenges, they have become opportunities for growth. Some OPDs faced leadership issues and governance gaps, and sustainability was uncertain, with many reliant on donor funding. Inclusion of people with psychosocial and intellectual disabilities also needs improvement. But the lessons are clear: OPDs thrive when they lead with tailored support; partnerships with counties open doors; and sustainability must be planned early.

“We’ve learned that inclusion has to be broader. We can’t only focus on seen disabilities; we need to bring in every voice.” – Vivian Sikinyi, Program Officer, CBM Global Kenya Country Team.

As the team embarks on Phase 2 of the project, the focus shifts from breadth to depth. Three OPDs are now receiving intensive mentoring to strengthen governance, sustainability, and advocacy. But we’re not leaving the others behind. They will be connected to regional hubs and funding opportunities, ensuring they too can continue to grow. The aim is to build strong champions who can mentor others and keep the momentum alive.

The OPD LEAD project is turning participation into leadership – creating confident advocates and inclusive communities.

One of 225 individuals in Kenya whose lives were transformed through access to assistive devices, unlocking dignity, mobility, and opportunity.



Making national anti-poverty programs work for people with disability in Indonesia

Our Australian and Indonesian Advisory teams have been supporting Indonesian Government efforts to provide social protection for people with disabilities. Social protection is the suite of programs that helps prevent people from falling into poverty at various points in their life. It includes things like cash allowances, subsidies for healthcare or education, unemployment benefits, aged pensions, concession cards, and disability benefits.

People with disabilities are much more likely to experience poverty than people without disabilities. They also incur significant extra costs associated with having a disability. Yet many are not accessing any form of social protection; they are falling through the 'safety net', with one quarter of people with disability – plus their family members – living below the poverty line.



Sri Kusumastuti from PROAKTIF showcasing CBM's work at Temu Inklusi in Indonesia.

3 The Australia-Indonesia Partnership Program for Poverty Alleviation and Comprehensive, Inclusive and Adaptive Social Protection.

In 2025, CBM Australia partnered with PROAKTIF³ and the Center for Inclusive Policy to conduct research and provide recommendations on how the Indonesian government could ensure an inclusive social protection system.

We spoke to people with disability in Indonesia, who told us that they are often not provided with any information about social protection programs, that registration processes are complex and inaccessible, and that the benefits they receive are not adequate to cover the extra costs of living with disability.

We analysed Indonesia's existing social protection programs and found several gaps in coverage for people with disability. CBM worked with global experts to outline the key steps needed to address these issues, providing examples of inclusion reforms.

The work of this partnership was showcased at Temu Inklusi, Indonesia's largest forum bringing disability stakeholders together, with social protection featuring for the first time as a priority.

Indonesia has committed to eliminating poverty among its population of 284 million people, and there is a growing awareness that this goal cannot be achieved without reaching all segments of the population, including people with disabilities. CBM Australia's research and guidance provide a practical way forward, with huge potential impact for more than 18 million people with disabilities across Indonesia.

A strong start for children with disabilities in Fiji:

In Fiji, many children with disabilities face barriers that prevent them from accessing health care, education, and social inclusion.

Services are often concentrated in urban areas, leaving families in rural communities without support. For parents already struggling with transport costs and limited resources, this means their children miss out on vital early intervention.

Through CBM Australia's partnership with the Frank Hilton Organisation, we're helping to change this reality together. **Mobile multidisciplinary teams – physiotherapists, speech therapists, nutritionists, and community workers – travel to homes and villages, bringing early intervention and training directly to the people who need it most.** Parents learn how to support their child's development and advocate for their rights, while children receive tailored care and assistive technology.

Kobi Maglen, CBM Australia's Director of Program Impact, with the visiting allied health team from Frank Hilton, meeting Bulou – a child supported through the project in Fiji.



This approach is life-changing. Children who were once isolated are now learning, playing, and growing. For one mother in Navua, the fortnightly visits mean her son can now sit independently and communicate using simple signs – something she never thought possible.

"We feel hope again." – Navua family member.

One family shared how their daughter, once unable to stand, now walks with support after months of home-based therapy.

"We never imagined this day would come." – Navua family member.

By reaching 65 children and their caregivers this year in their own homes and communities, together we're able to ensure children with disabilities aren't left behind. CBM Australia and partners in the Pacific are building inclusive communities where every child can thrive.

Rise and Thrive: Bringing hope for mental health in the Philippines

In the Philippines, hope is rising for people with mental health conditions and psychosocial disabilities.

Through CBM Australia's Rise and Thrive: Building Resilient Communities through Inclusive Mental Health program, funded by the Australian Government, we are working to transform mental wellbeing by strengthening community support, improving access to services, and promoting policies and systems that respect and protect the rights of people with psychosocial disability.

The project is led by our local partner, the Ateneo Center for Research and Innovation (known locally as Ka-ginhawa), and their passionate advocate for inclusive mental health, Dr Dinah.

"Mental health is contributory to national development. We recognise several needs in the gaps in mental health in the Philippines. We hope that this project will address some of these gaps." – **Dr Dinah.**

Right now, too many Filipinos are unable to access the care they desperately need. Services are scarce and often far away. A recent national mental health and wellbeing survey revealed a staggering 1 in 14 Filipinos will experience a mental health condition in their lifetime, with common issues including anxiety, depression, substance abuse, and psychosis.

Ka-ginhawa is helping change this – starting at the community level. The project is providing support that wraps around people with mental health conditions in ways that were not previously possible.

"It's good that there is Ka-ginhawa. No one was helping us before." – **Catherine, project participant.**

"Ka-ginhawa is the only project available for [people with] psychosocial or mental illness [that is] inclusive or for everyone." – **Edgar, OPD President, Ligao City.**

But this is not just about improving services – it's about empowering communities to play an active role. As Dr Dinah explains, "The community is actually a big support... They're not just receivers, but they're also supporters."

The vision is clear: care that is accessible, inclusive, and rooted in local communities. Instead of isolation, people will find support close to home. For Dr Dinah, this is about more than health. It's about dignity, inclusion, and recovery.

"We hope that we will influence the government and systems to be able to change for providing better services that are rights-based and recovery-oriented." – **Dr Dinah.**

With communities at the heart of the project, the project promises a future where mental health care is not a privilege, but a right for all.

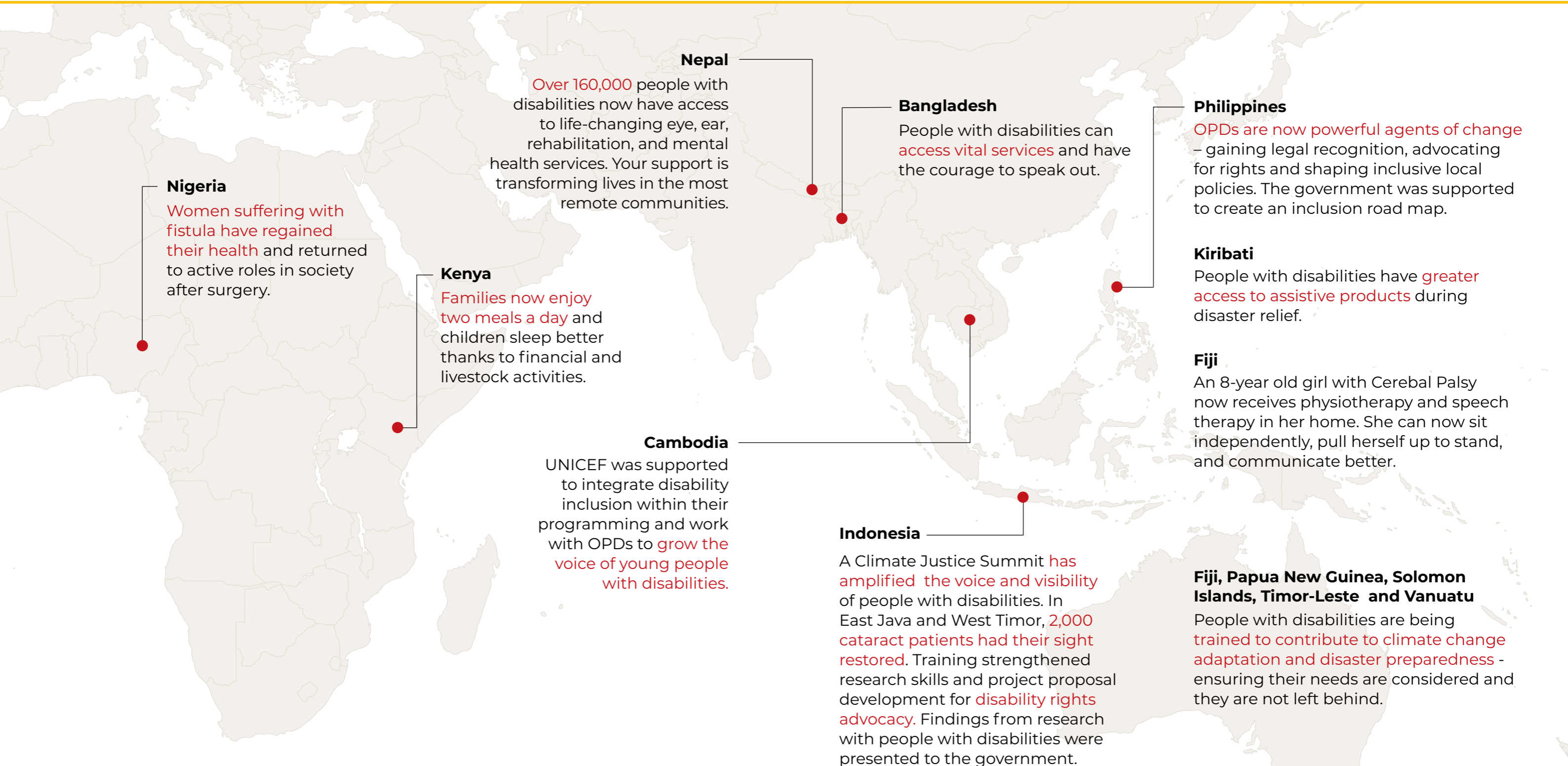
This initiative is part of CBM Australia's wider Rise and Thrive program – implemented in the Philippines and Fiji – supporting people with mental health conditions and psychosocial disabilities to access quality mental health services and community support systems that are rights-based, equitable, effective, and resilient.

This project is supported by the Australian Government through Partnerships for a Healthy Region.



Dr Dinah, who spoke with CBM about the importance of bringing inclusive mental health services through the Rise and Thrive project to communities in the Philippines.

Your support in action



CBM Australia acknowledges the support of the Australian Government through the Australian NGO Cooperation Program (ANCP) and the Partnerships for a Healthy Region initiative for some of the projects mentioned.

Our governance

The CBM Australia Board meets in person at our new Melbourne office, combined with online Committee meetings designed to enable engagement across all our work. Multiple Board members have lived experience of disability. All Board members are voluntary non-executives.

The Board and its four Committees adaptively manage our Strategic Directions 2026, while looking ahead to our next Strategy iteration to 2030. Regular external Board reviews are conducted, most recently concluded in early 2025. Our Board Development & HR Committee (BDHR) leads Board recruitment and skills mapping, review of regulatory requirements and good governance practice, and oversight of CBMA culture, engagement, and ways of working.

In 2025, at end of tenure, Mick Turnbull retired from the Board, while Phil Newman was welcomed. Mick was our Board Chair from 2017 to 2021 and served on the Board of the CBM Global Federation for 5 years to September 2025. Phil brings extensive governance, financial and international development experience. In mid-2026, Elizabeth Lucas also reaches the end of her Board tenure.

A Board Observer program has commenced with Caroline Akosile who brings vital program experience across decades in Nigeria and is settling in 2026 to life in Australia.

Our Finance, Risk & Audit Committee (FRAC) superintends healthy financial and risk management, including cyber security and AI use. In 2025 an Investment Manager tender process was conducted for good governance,

resulting in a very favourable outcome for CBMA. FRAC continues to work with its Balance Sheet Strategy, which embeds process around how CBMA best leverages its strong Balance Sheet position for sustainable positive impact.

Our **Programs Committee** sustained oversight of program impact for CBMA, with particular attention to our advisory offerings and our expanding work in the Pacific. Conversation is focused around how CBMA supports greater empowering of local leadership within all our partnerships. In 2025, the whole Board attended Programs Committee meetings, including for special focus on the conclusion of our longstanding disability-specific advisory DFAT Contract. The integrated future for advisory that embeds disability with gender and social inclusion is welcomed.

Our **Community Engagement & Fundraising Committee (CEF)** watches data and learnings to consider the CBM brand reach and resonance and how more Australians might come to engage with the cause of fighting poverty and exclusion globally. CEF oversees CBMA's compliance with the Australian Council for International Development (ACFID) Fundraising Charter.

CBM Australia is a full and strongly contributing member of the CBM Global Federation, alongside CBM Ireland, CBM Kenya, CBM New Zealand, CBM Switzerland, and CBM UK.

Board members as of 31 December 2025



Andrew Ellis
Chair

Andrew was appointed to the Board in 2018 and holds a Bachelor of Engineering, a Master of Project Management, and a Master of Business Administration. He is an experienced not-for-profit CEO and board director. Andrew was appointed Chair in May 2021, and, as Chair, operates as a Member of all Board Committees. He has been a Board member with CBM Global since September 2025.



Nathan Clarke
Committee Chair

Nathan joined the Board in September 2024. Nathan is Practice Director at Six O'Clock Advisory and holds a Bachelor of International Relations and a Diploma of Investor Relations. From 2025, Nathan chaired our CEF Committee and continued as a Member of FRAC.



Elizabeth Wighton
Committee Chair

Appointed to the Board in May 2021, Elizabeth is a Special Counsel with Gilbert + Tobin, providing legal advice to charities and NFPs, and holds a Master of Laws. In 2025, Elizabeth chaired BDHR and was a member of our CEF Committee.



Alex Phillips

Appointed to the Board in May 2023, Alex is a Chartered Accountant bringing experience in commercial and NFP settings. He holds a Master of Accounting and Finance. In 2025, Alex was a Member of our FRAC, BDHR, and Programs Committees.



Elizabeth Lucas
Deputy Chair, Committee Chair

Elizabeth joined the Board in 2016 and was appointed as Deputy Chair in 2017. She is a Fellow of the Institute of Chartered Accountants and a Partner with Grant Thornton. In 2025, Elizabeth chaired FRAC and was a Member of our Programs Committee.



Sarah Bearup
Committee Chair

Sarah joined the Board in May 2022. She holds a Master's degree of International and Community Development and is Chief Operating Officer for World Vision International's Asia-Pacific Office. Sarah continues to chair our Programs Committee, and has joined our CEF Committee.



Phil Newman

Phil was appointed to the Board in September 2025. The Business Manager for Emmaus Christian College in Canberra, Phil holds a Bachelor of Arts and a Diploma in Financial Planning. Upon joining, Phil became a member of our FRAC and CEF Committees.



Wayne Tattersall

Returning to the Board in September 2024, following service in 2019-2021, Wayne is an experienced company director, chair, company secretary, and CFO. He is a Fellow of CPA Australia and holds a Bachelor of Commerce. Wayne continues as a Member of our FRAC and BDHR Committees.

Our finances

CBM Australia's supporters continue to demonstrate extraordinary generosity, contributing an impressive \$22.76M in 2025. This is our strongest year of giving since 2021.

A major contributor to this result was bequest income, which achieved an all-time high of \$5.74M.

CBM Australia also recorded more than \$1.1M in positive unrealised growth in the value of CBMA's investment portfolio. While this growth strengthens the overall financial position, it represents unrealised market gains that support long-term sustainability rather than day-to-day program delivery

Together, strong income performance and careful cost management resulted in a healthy comprehensive surplus for the year.

\$27.1M
of program
expenditure
in 2025

All financial figures and ratios shown are derived from CBM Australia's audited financial statements.

CBM Australia is actively reviewing future investment options and program funding priorities to ensure these gains deliver maximum impact over time.

In 2025, for every dollar given to CBM Australia, **79 cents supported our international programs** and 16 cents generated funds to support future programs, leaving 5 cents to deliver accountability and administration.

The Australian Government has continued its partnership with CBM Australia through the Australian NGO Cooperation Program (ANCP) and the Partnerships for a Healthy Region initiative to implement development and poverty-alleviation programs overseas.

\$237M
combined total
program expenditure
for the last 10 years



Juliana as a part of our partnered women's health project in Nigeria with Survive Fistula Healthcare Foundation through the ANCP, supported by the Australian Government.

Directors' declaration

The directors of CBM Australia Ltd declare that the accompanying concise financial report is presented fairly in accordance with applicable Australian Accounting Standards and is consistent with the CBM Australia 31 December 2025 financial statements.

In respect to the 31 December 2025 financial statements of CBM Australia, the directors declare that the financial statements and associated notes comply with Accounting Standards and the requirements of the Australian Council for International Development Code of Conduct (ACFID).

The financial statements and notes give a true and fair view of the financial position as at 31 December 2025 and the performance of CBM Australia for the year then ended.

In the directors' opinion, there are reasonable grounds to believe that CBM Australia will be able to pay its debts as and when they become due and payable. This statement has been made in accordance with a resolution of the directors made on 28 March 2026.



Andrew Ellis
Chair



Elizabeth Lucas
Deputy Chair,
Committee Chair



Members of the CBM Australia Board as at 31 December 2025. Left to right: Nathan Clarke, Alex Phillips, Sarah Bearup, Andrew Ellis, Elizabeth Lucas, Elizabeth Wighton, Phil Newman, Wayne Tattersall.

Auditor's report

CBM Australia
ABN 23 005 326 849

Report of the Independent Auditor on the Summary Financial Statements

Opinion

The summary financial statements, which comprise the summary statement of financial position as at 31 December 2025, the summary statement of profit and loss and other comprehensive income and a summary statement of changes in equity for the year then ended, are derived from the audited financial report of CBM Australia for the year ended 31 December 2025.

In our opinion, the accompanying summary financial statements are consistent, in all material respects, with the audited financial report.

Summary Financial Statements

The summary financial statements do not contain all the disclosures required by Australian Accounting Standards – Simplified Disclosure Statements (including Australian Accounting Interpretations), the Australian Charities and Not-for-profits Commission Act 2012 and the ACFID Code of Conduct. Reading the summary financial statements and the auditor's report thereon, therefore, is not a substitute for reading the audited financial report and the auditor's report thereon. The summary financial statements and the audited financial report do not reflect the effects of events that occurred subsequent to the date of our report on the audited financial report.

The Audited Financial Report and Our Report Thereon

We expressed an unmodified audit opinion on the audited financial report in our report dated 30 March 2026.

Board's Responsibility for the Summary Financial Statements

The Board is responsible for the preparation and presentation of the summary financial statements.

Auditor's Responsibility

Our responsibility is to express an opinion on whether the summary financial statements are consistent, in all material respects, with the audited financial report based on our procedures, which were conducted in accordance with Auditing Standard ASA 810 Engagements to Report on Summary Financial Statements.

William Buck Audit (Vic) Pty Ltd
ABN 59 116 151 136

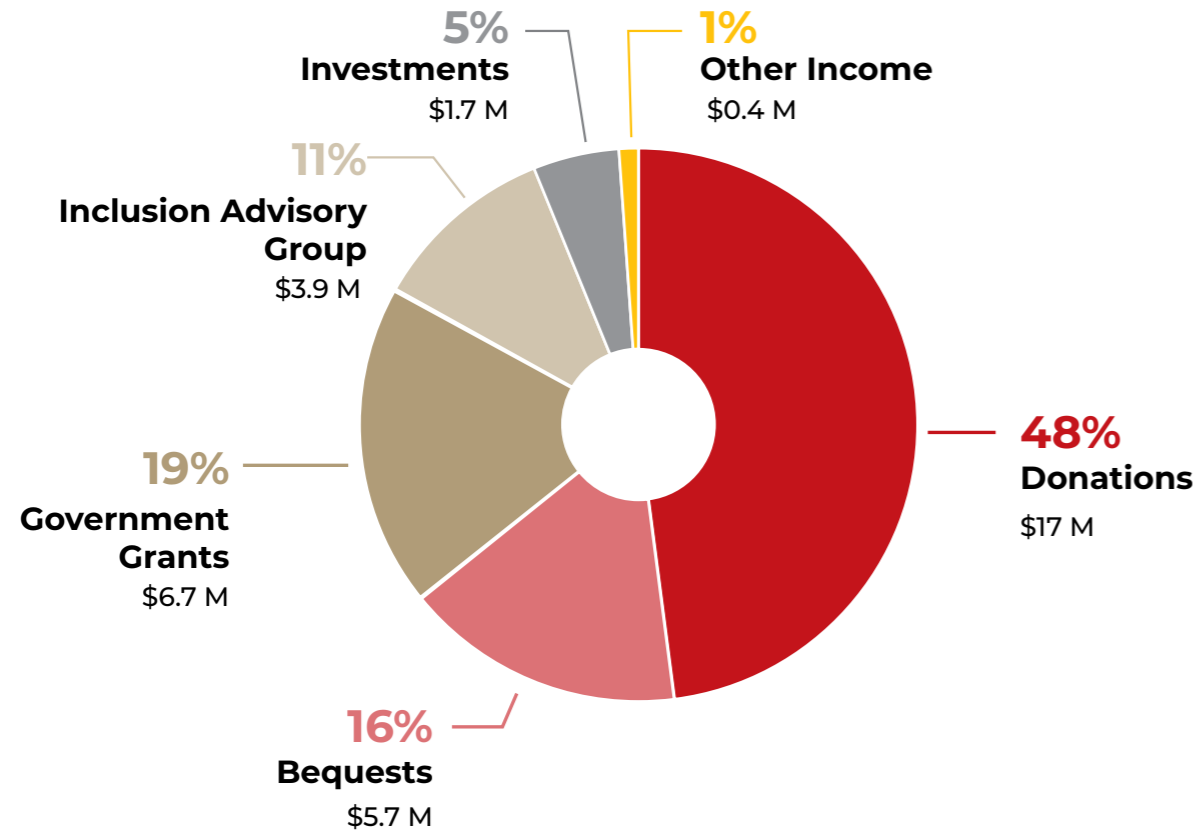
C. L. Sweeney
Director
Melbourne, 30 March 2026



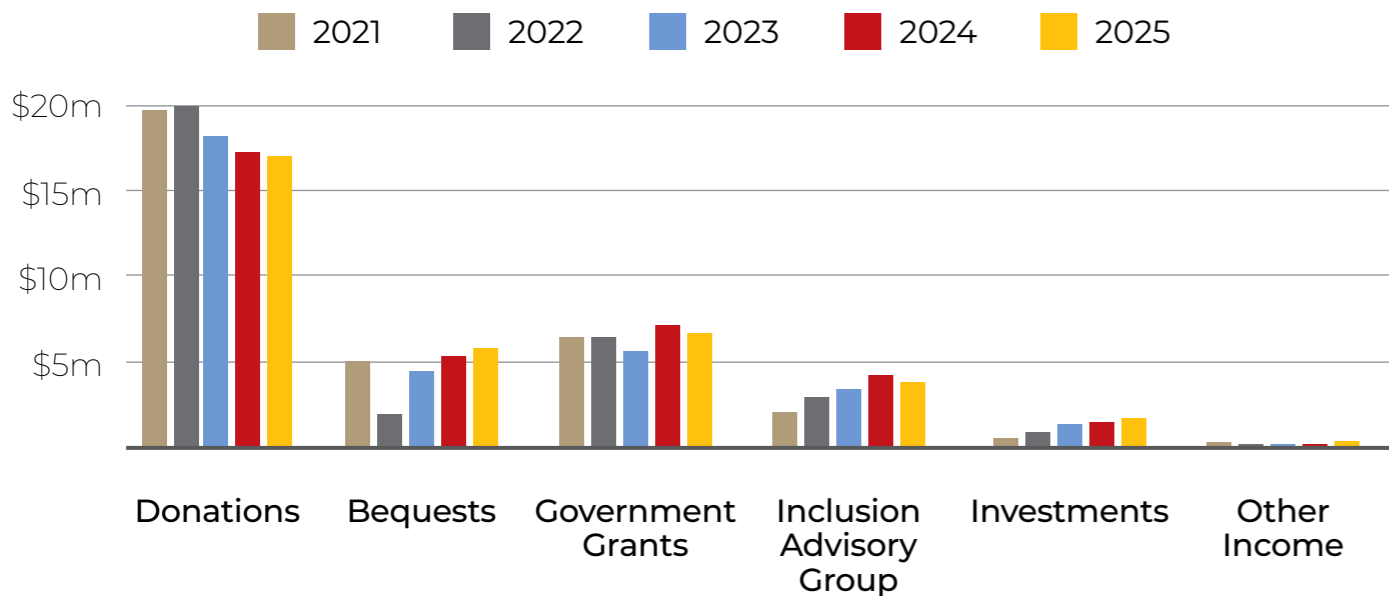
Level 20, 181 William Street, Melbourne VIC 3000
+61 3 9824 8555
vic.info@williambuck.com
williambuck.com.au

William Buck is an association of firms, each trading under the name of William Buck across Australia and New Zealand with affiliated offices worldwide. Liability limited by a scheme approved under Professional Standards Legislation.

Where did CBM Australia's support come from in 2025?



Five-year income trend by source

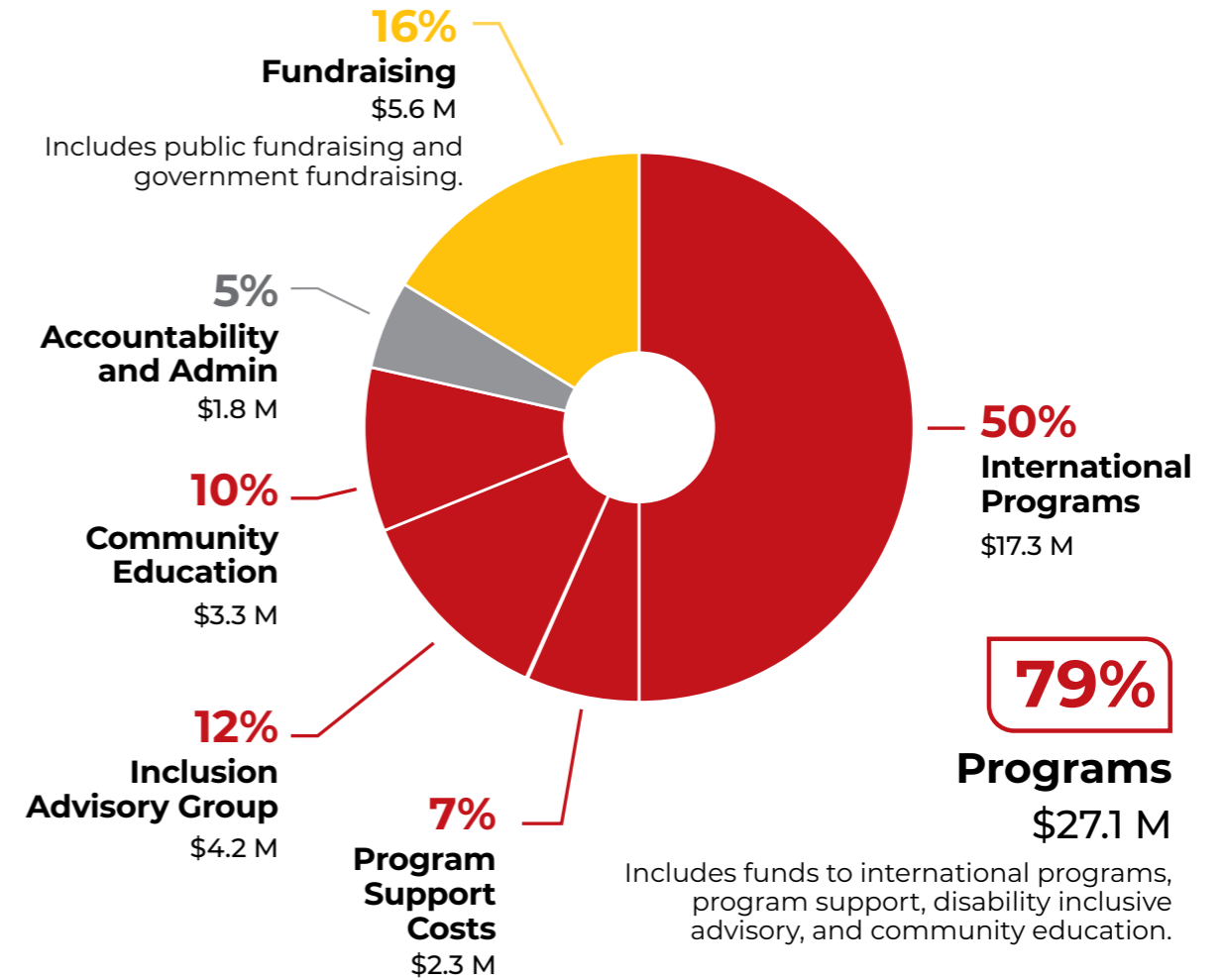


Other Income includes grants from overseas, reimbursement from CBM International, CBM Global and other CBM Member Associations, profit from sales of fixed assets, and Government pandemic support. In 2022 figures, the profit on sale of 56 Rutland Rd Box Hill of \$9.02M has been excluded on the basis that it does not represent ongoing operations.

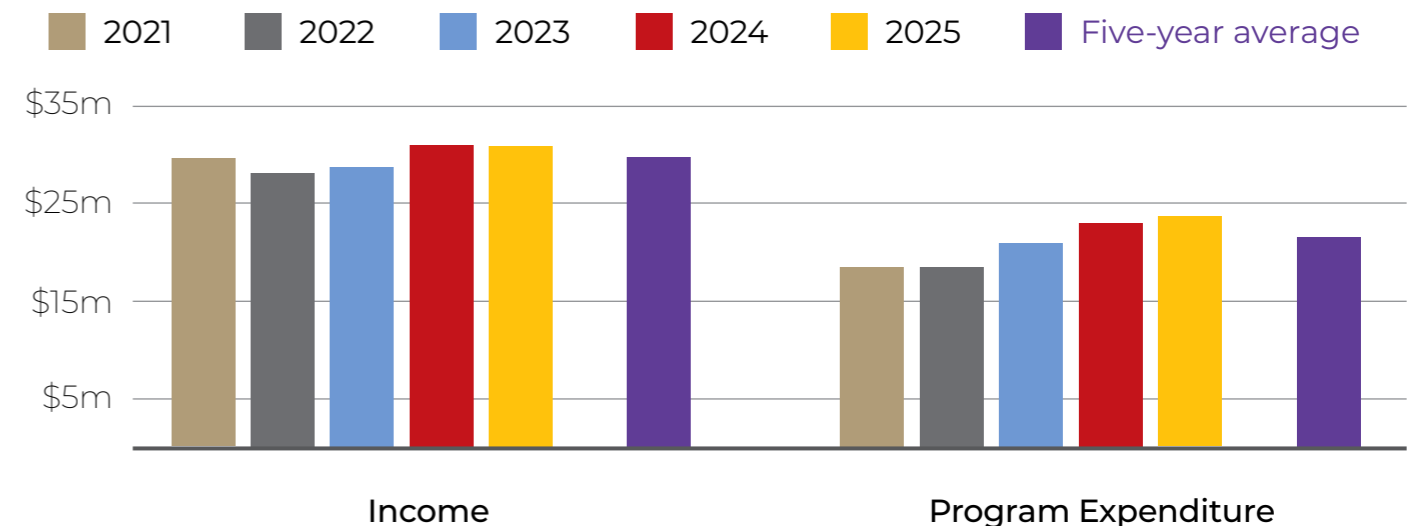
Changes in the market value of CBM Australia's investments have not been included as these movements have not resulted in CBM Australia gaining or losing any cash or capital.

All financial figures and ratios shown are derived from CBM Australia's audited financial statements.

How did CBM Australia spend each dollar in 2025?



Five-year income and program expenditure trend



All financial figures and ratios shown are derived from CBM Australia's audited financial statements.

Statement of profit and loss and other comprehensive income

for the year ended 31 December 2025

Revenue		2025 \$'000	2024 \$'000
Donations and gifts	Monetary	17,017	17,274
	Bequests & legacies	5,743	5,358
Grants recognised	Department of Foreign Affairs and Trade	6,696	7,129
	Inclusion Advisory Group income	3,857	4,217
Other income	Investment income	1,746	1,418
	Other revenue	390	240
	Increase / (Decrease) in fair value of financial assets	1,129	1,839
Total revenue		36,597	37,475
International Aid and development programs expenditure	Funds to international programs	(17,320)	(16,086)
	Program support costs	(2,292)	(2,586)
	Inclusion Advisory Group expenditure	(4,244)	(4,313)
	Community education	(3,333)	(3,482)
Fundraising costs	Public	(5,583)	(6,301)
	Government multilateral and private	(53)	(46)
	Accountability and administration	(1,756)	(1,822)
Total expenditure		(34,581)	(34,636)
Excess of revenue over expenditure for the year		1,998	2,839
Other comprehensive income for the year		-	-
Total comprehensive income for the year		1,998	2,839

Statement of financial position

as at 31 December 2025

Assets		2025 \$'000	2024 \$'000
Current assets	Cash and cash equivalents	7,544	4,432
	Trade and other receivables	1,159	1,152
	Financial assets	30,274	30,946
	Total current assets	38,977	36,530
Non-current assets	Property, plant and equipment	8,233	8,382
	Total non-current assets	8,233	8,382
Total assets		47,210	44,912
Current liabilities	Trade and other payables	527	864
	Employee benefits	1,186	1,198
	Other liabilities	4,006	3,330
	Total current liabilities	5,719	5,392
Non-current liabilities	Employee entitlements	101	128
	Total non-current liabilities	101	128
Total liabilities		5,820	5,520
Net assets		41,390	39,392
Equity	Perpetual trusts	152	152
	Committed funds reserve	12,431	11,662
	Capital profits reserve	8,753	8,970
	Retained surpluses	20,054	18,608
	Total equity	41,390	39,392

The summary reports have been prepared in accordance with the requirements set out in the ACFID Code of Conduct. For further information on the Code, please refer to the ACFID Code of Conduct Implementation Guidance available at [ACFID's website](#). For a copy of CBM Australia's full audited financial statements or further information on CBM Australia's programs, please contact our team on 1800 678 069 or visit [CBM's website](#).

Statement of changes in equity

	Perpetual trusts \$'000	Committed funds \$'000	Capital profits \$'000	Retained profits \$'000	Total equity \$'000
Balance at 1 January 2025	152	11,662	8,971	18,607	39,392
Excess of revenue over expenditure	-	-	-	1,998	1,998
Transfers	-	769	[218]	[551]	-
Total comprehensive income	-	-	-	1,998	1,998
Balance at 31 December 2025	152	12,431	8,753	20,054	41,390

The summary reports have been prepared in accordance with the requirements set out in the ACFID Code of Conduct. For further information on the Code, please refer to the ACFID Code of Conduct Implementation Guidance available at [ACFID's website](#). For a copy of CBM Australia's full audited financial statements or further information on CBM Australia's programs, please contact our team on 1800 678 069 or visit [CBM's website](#).

Legacy gifts

CBM Australia remembers and expresses deep appreciation to the families and those closest to supporters who have left CBM Australia a gift in their will.

Some of the Estates making distributions in 2025 to the work of CBM Australia are warmly recognised here. We equally acknowledge and thank the many other Estates who have chosen to remain anonymous.

- Estate of Aquilina
- Estate of Birrell
- Estate of Clay
- Estate of Edwards
- Estate of Feil
- Estate of Fisher
- Estate of Gough
- Estate of Hardman
- Estate of Kinsman
- Estate of Klein
- Estate of Lang
- Estate of Membrey
- Estate of Moss
- Estate of Peterken
- Estate of Powell
- Estate of Roberts
- Estate of Smith
- Estate of Swinden
- Estate of Thompson

More about CBM Australia

CBM Australia Limited is a company limited by guarantee under the Australian Corporations Act and a registered Charity with the Australian Charities and Not-for-profits Commission.

The Australian Taxation Office has given CBM Australia Ltd the status of a Deductible Gift Recipient, granted exemption from Income Tax, and provided concessions for Fringe Benefits Tax and GST.

CBM Australia is accredited by the Australian Government Department of Foreign Affairs and Trade, which is responsible for managing Australia's aid program.

To maintain accreditation, CBM Australia's systems, policies, and processes are rigorously reviewed, at least every five years, by the Australian government. Last reaccredited in 2022, CBM Australia receives and gratefully acknowledges support through the Australian NGO Cooperation Program.

CBM Australia is a signatory to the Australian Council for International Development (ACFID) Code of Conduct, which is a voluntary, self-regulatory sector code of good practice. As a signatory, we are committed, and fully adhere, to the ACFID Code of Conduct, ensuring transparency, accountability, and integrity in our work. For further information on the Code, visit [ACFID's website](#).

CBM Australia hosts the Secretariat of the Australian Disability and Development Consortium, a member-based network for those working or interested in advancing disability equity and rights through international development and humanitarian efforts.

In 2025, CBM Australia continued as a Member of the Fundraising Institute of Australia (FIA) and the Association for Data-Driven Marketing & Advertising (ADMA). CBM Australia is committed to full alignment with the FIA Code of Conduct and relevant components of the ADMA Code of Practice.



Please stay in touch

To sign up for our regular email, head to cbm.org.au/subscribe

f facebook.com/CBMAustralia

@ [@cbmaustralia](https://instagram.com/cbmaustralia)

in linkedin.com/company/cbm-australia



cbm.org.au

1800 678 069

PO Box 196, RICHMOND VIC 3121

CBM Australia Ltd ABN 23 005 326 849